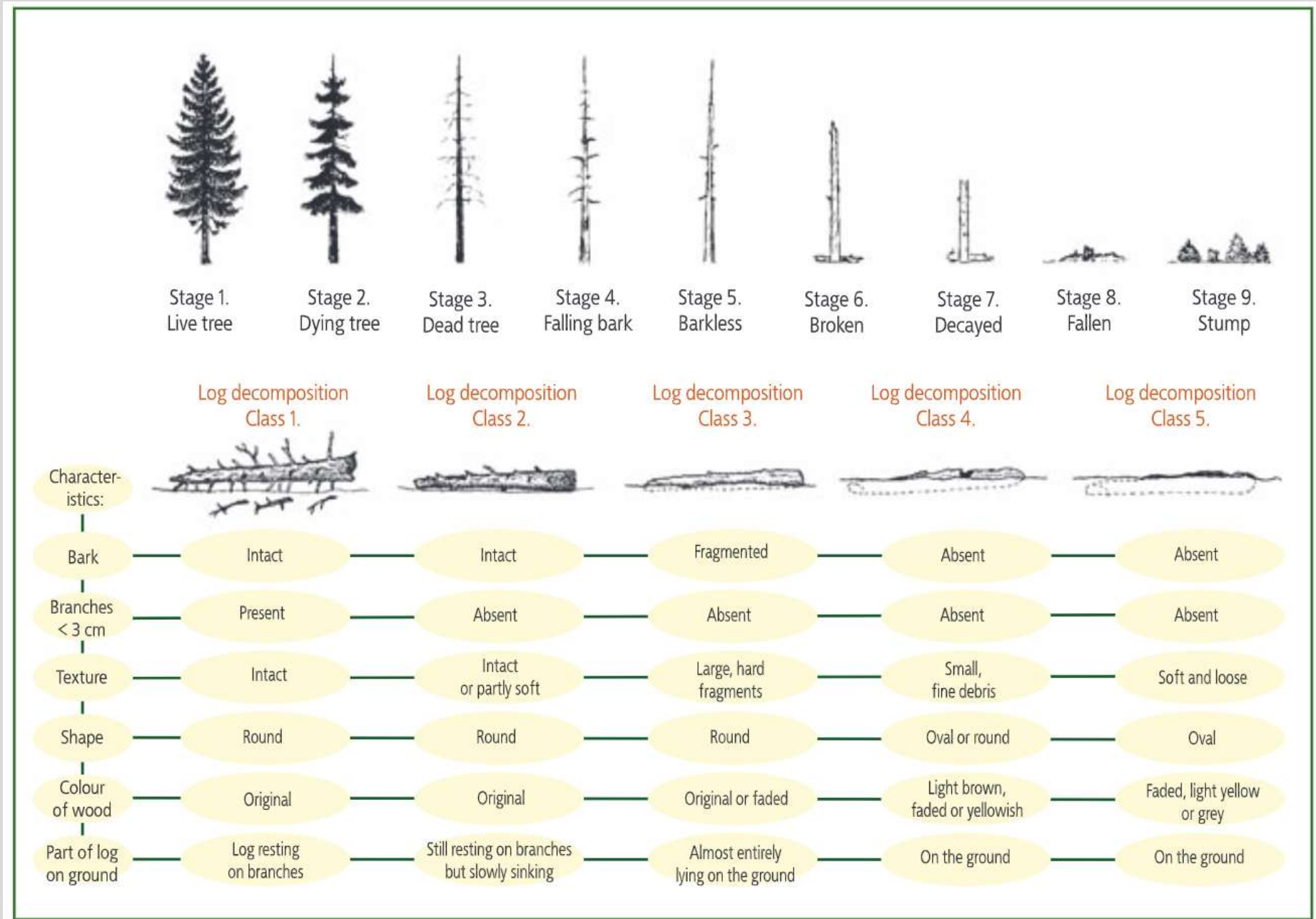


Dead wood habitats

Dmitry Schigel

Time

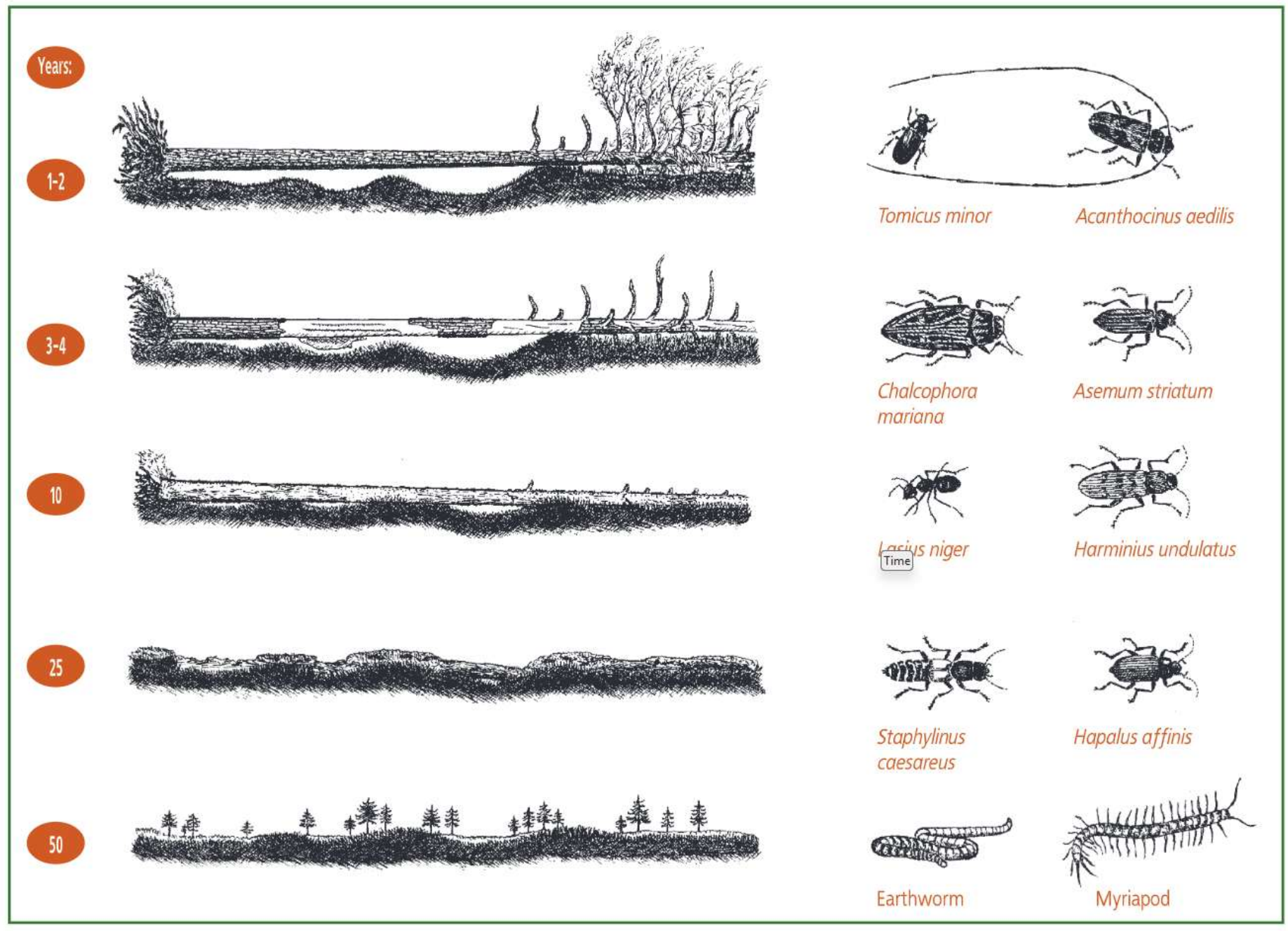






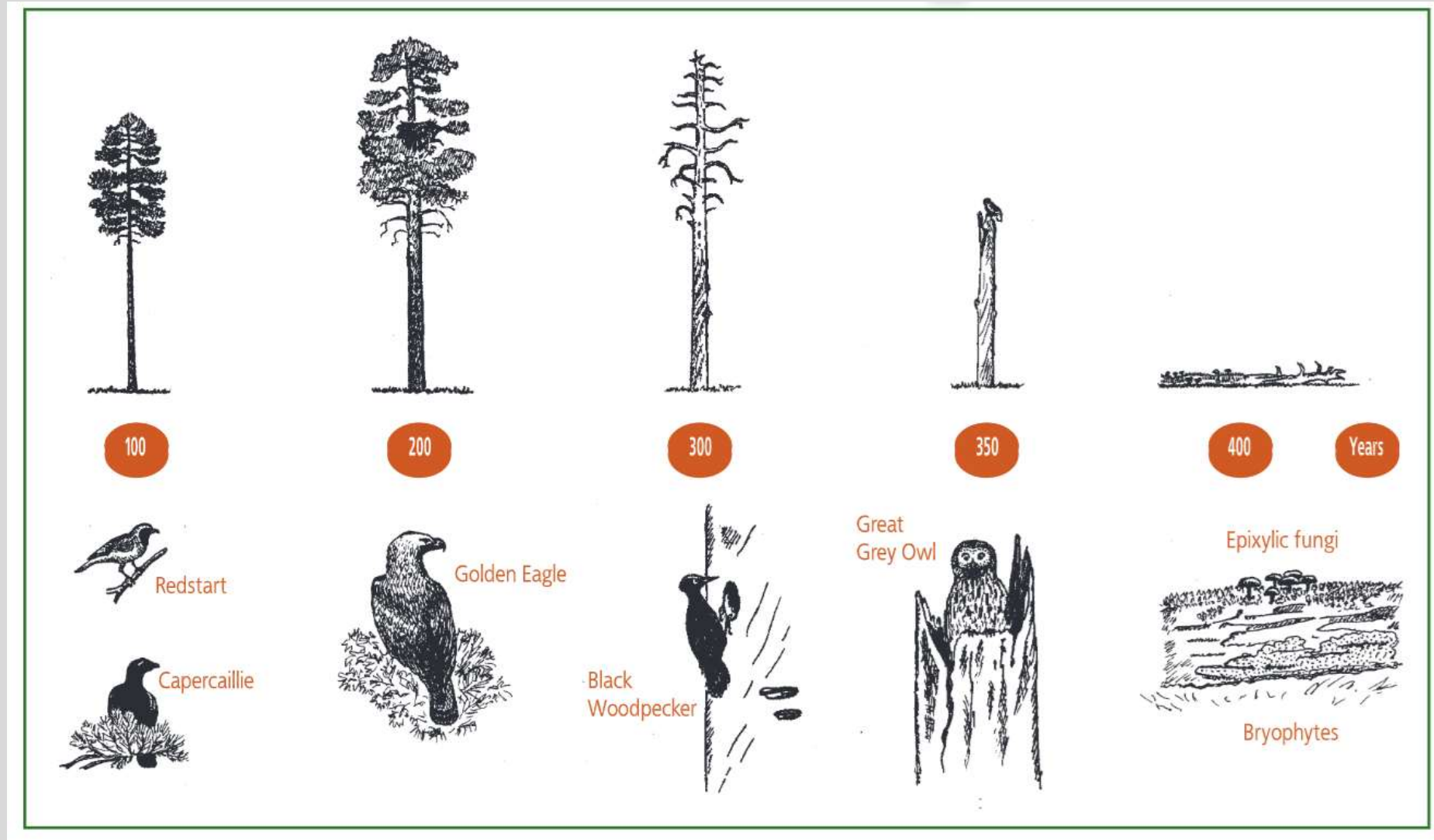


Time



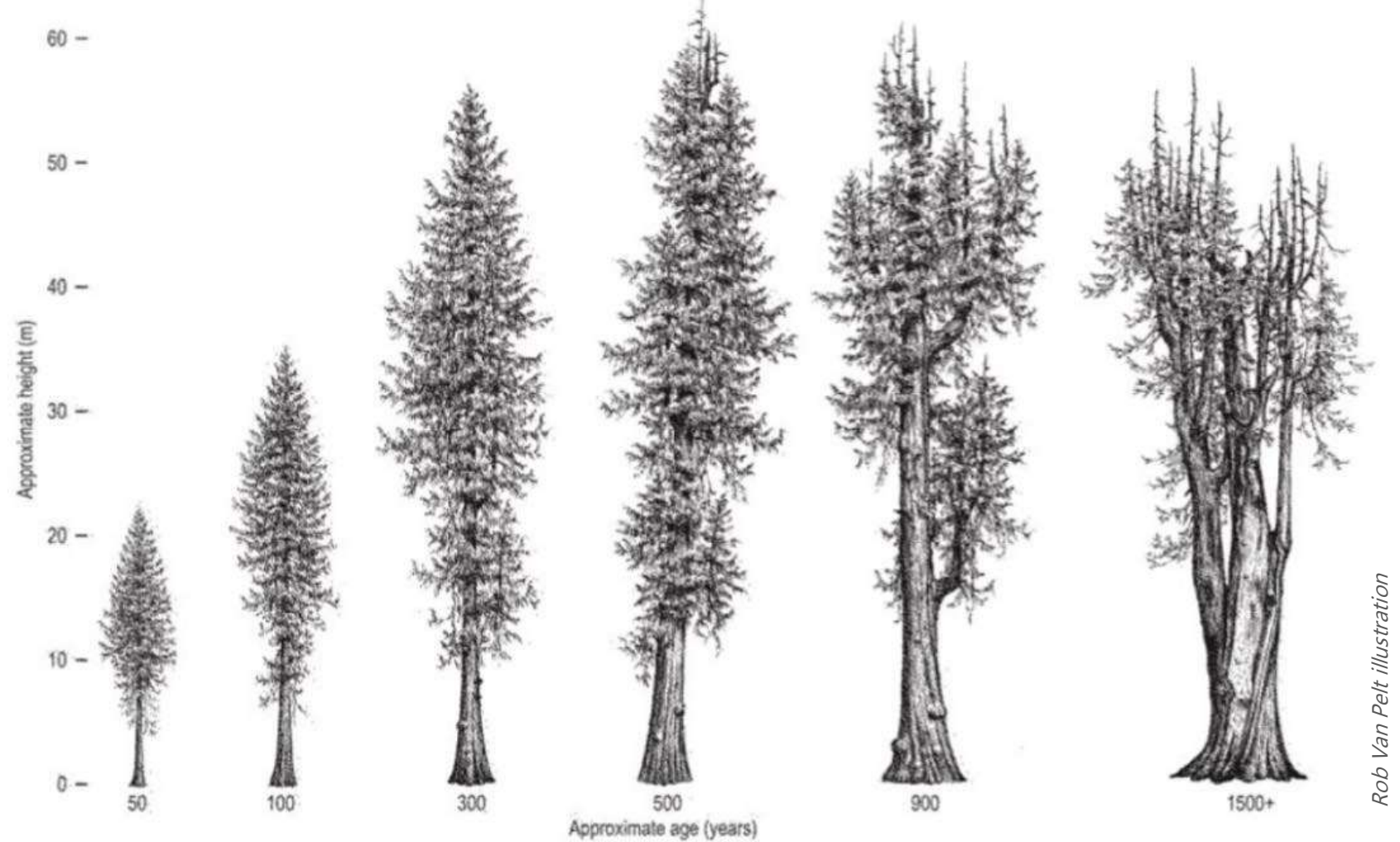


Time





Time

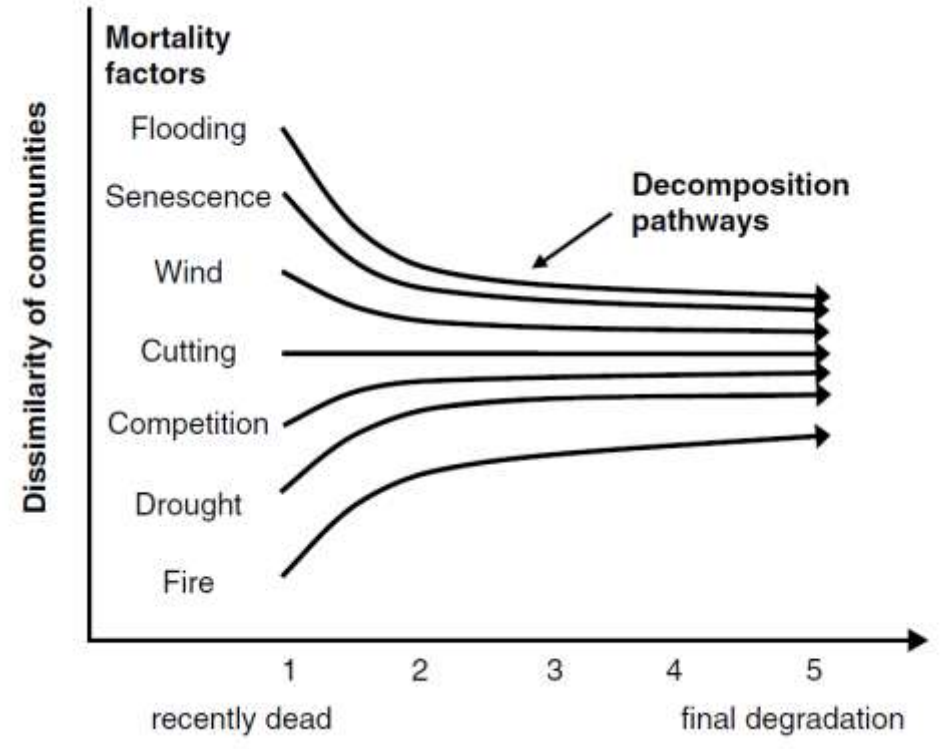
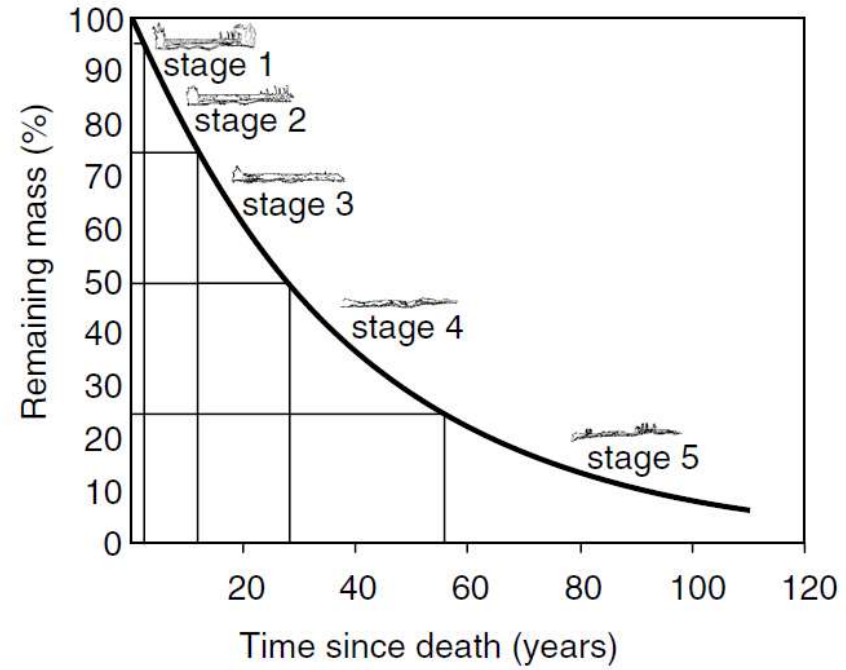
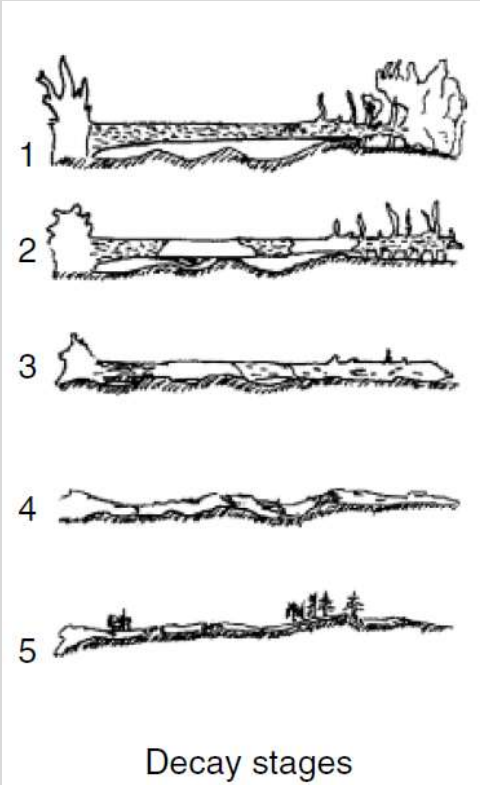
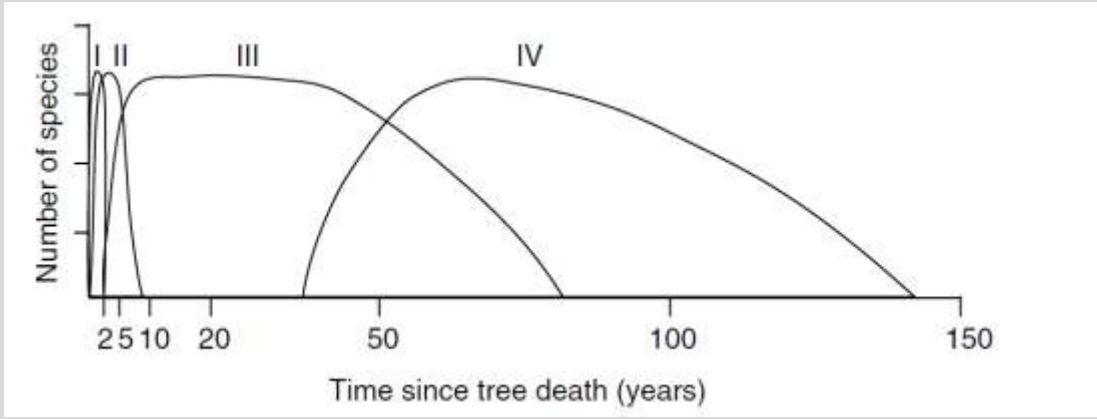


Rob Van Pelt illustration

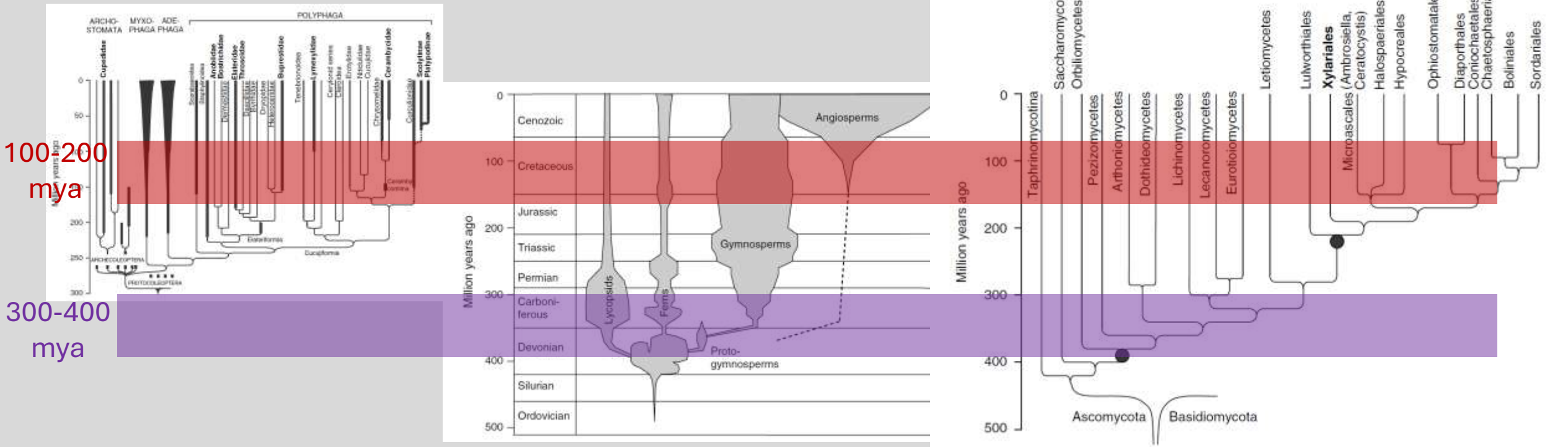
Figure 102. Changes in crown form of western redcedar over time. Note that trees remain relatively simple for the first several centuries — it is only in great age that the individual character and *candelabra* tops often seen in ancient stands emerge.



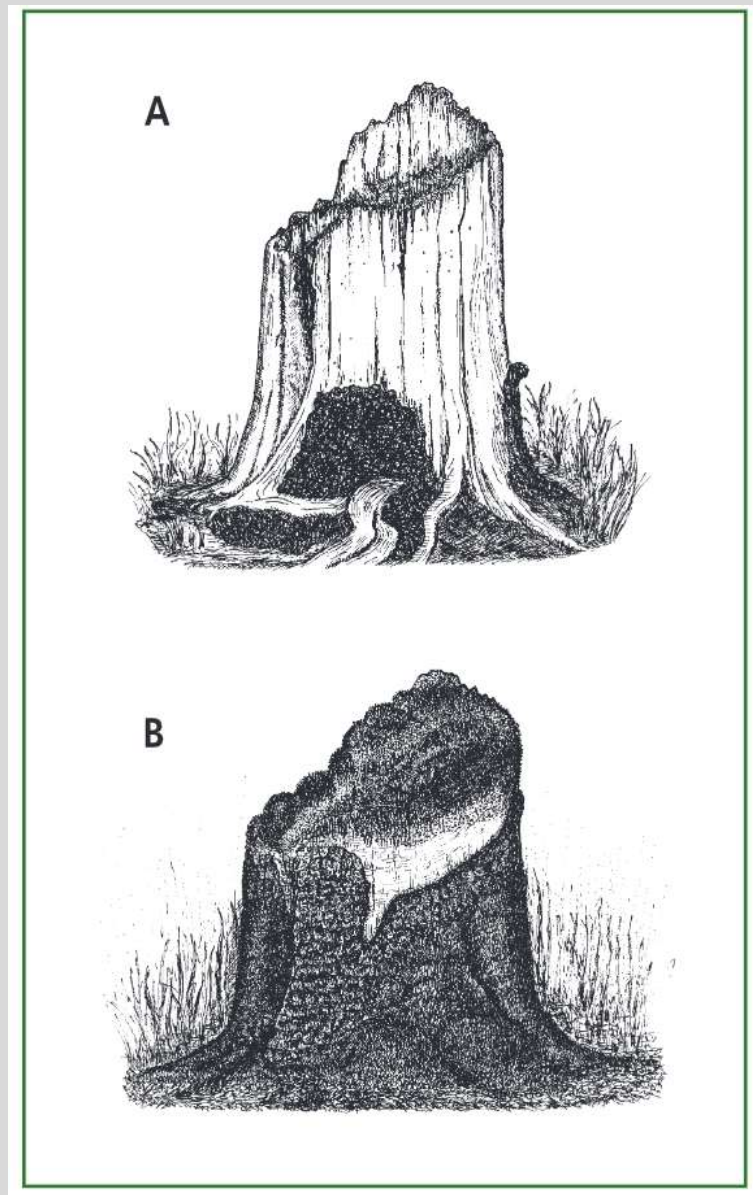
Time



Time



Climate

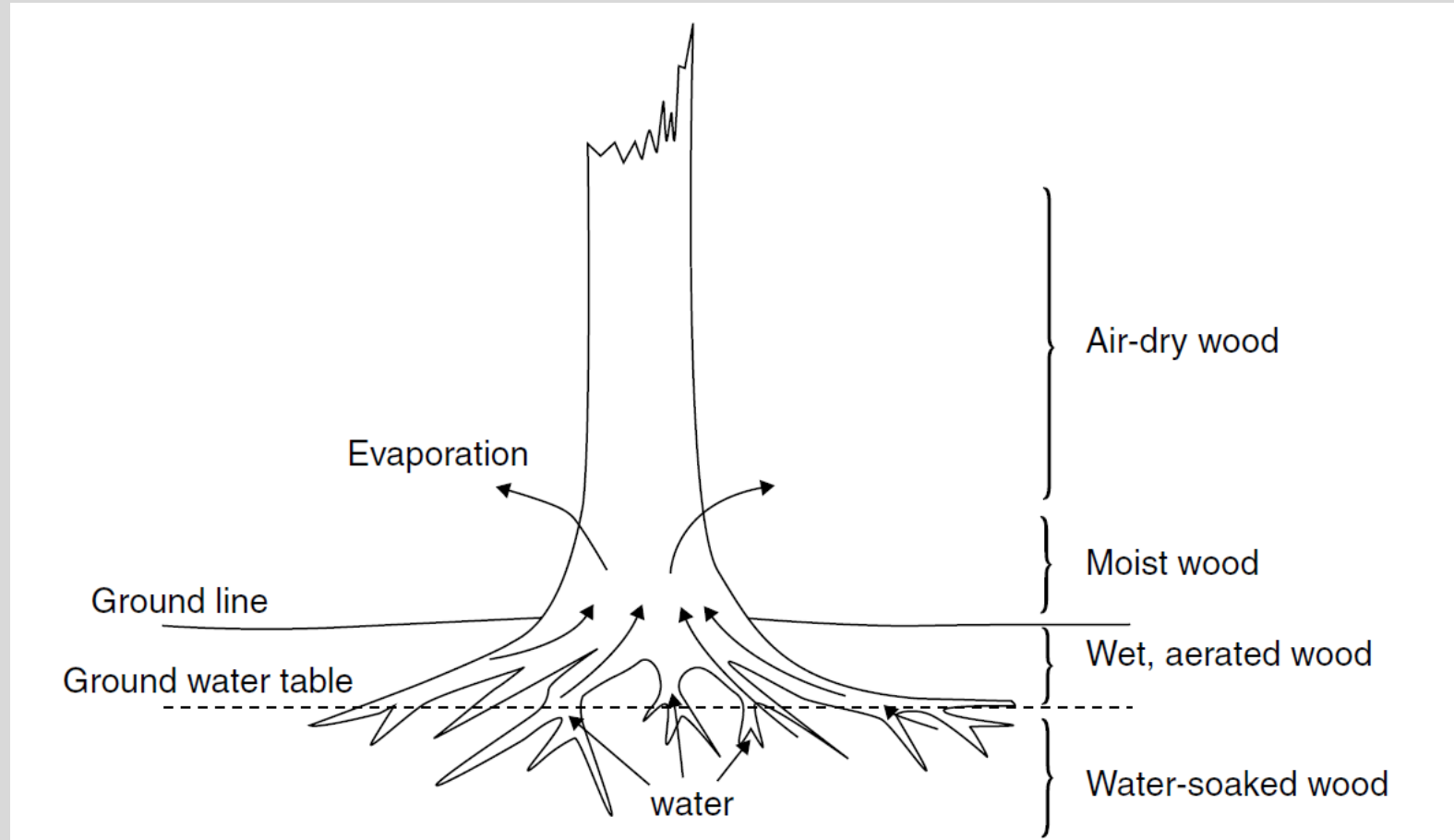
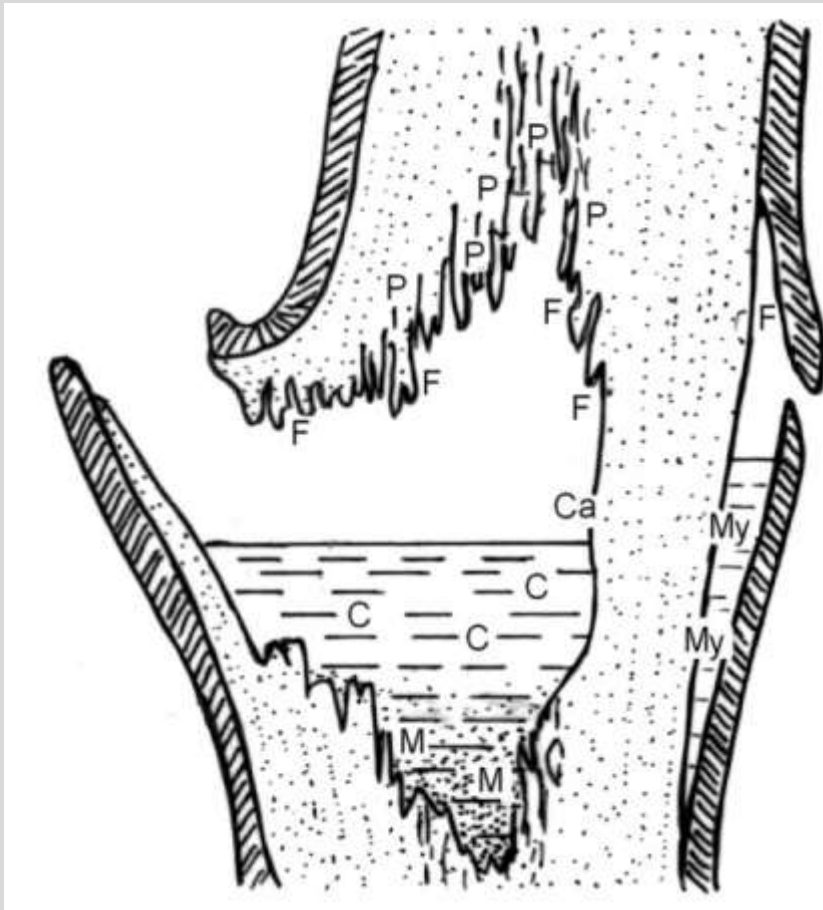


Bobiec A, Gutowski JM, Zub K, Pawlaczyk P, Laudenslayer WF 2005. [The Afterlife of a Tree](#). WWF Poland, 252 pp. ISBN 83-920712-1-2

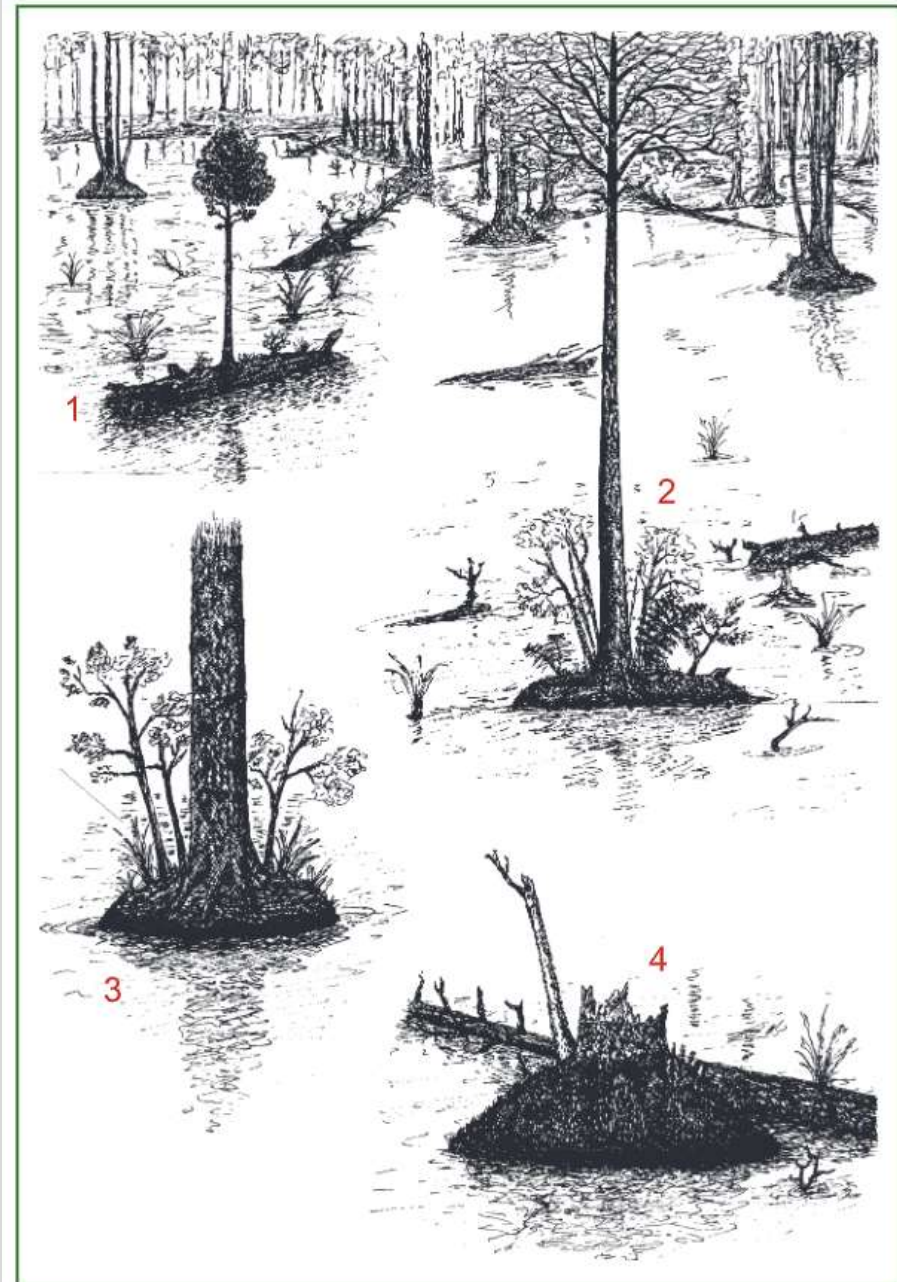
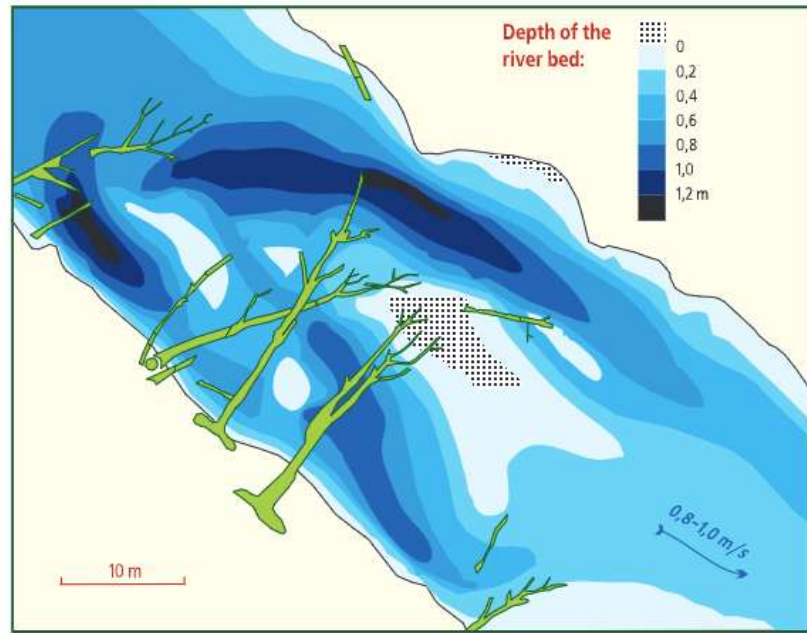
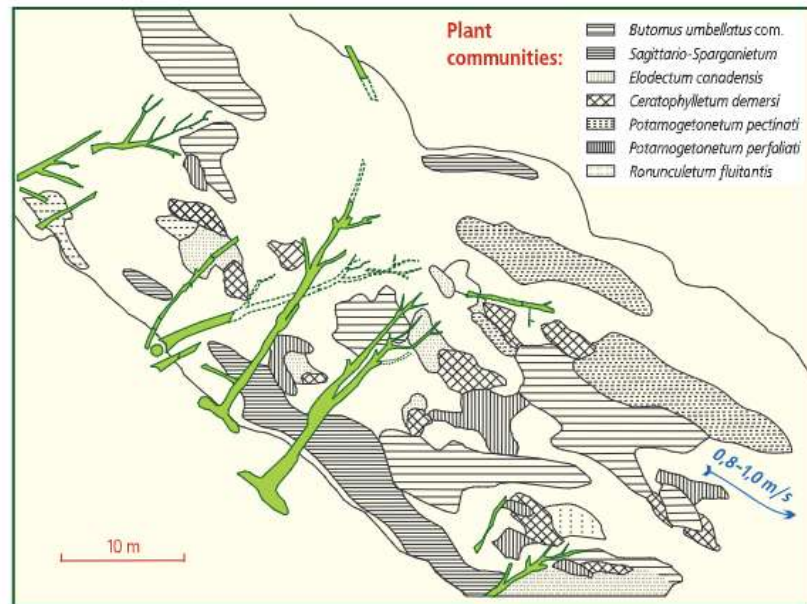
A – sunny spot, B - shade



Water



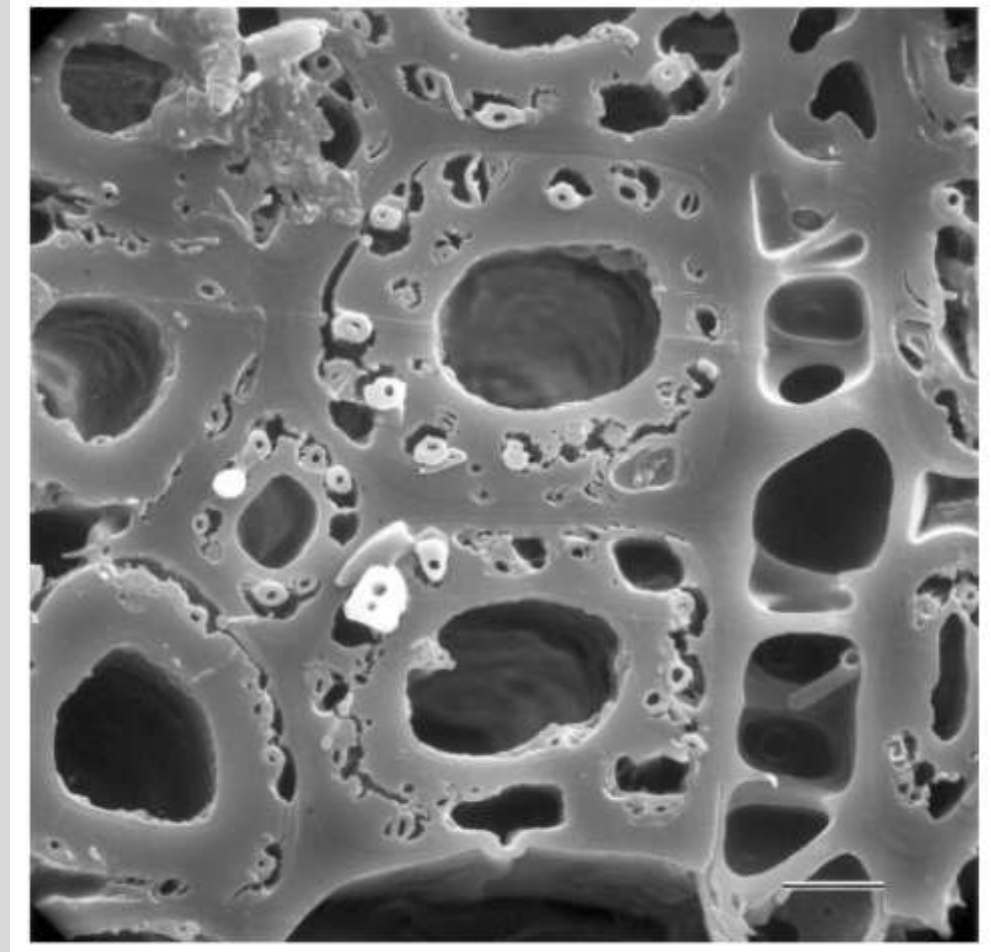
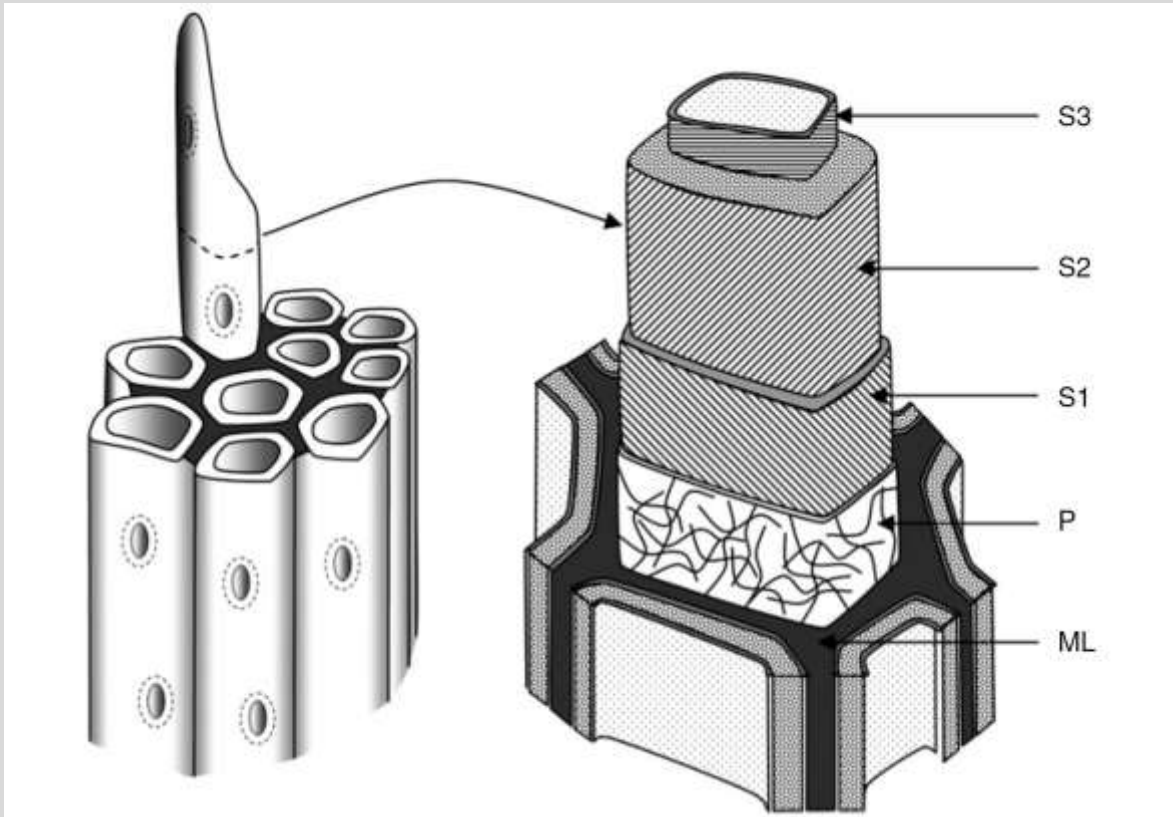
Water



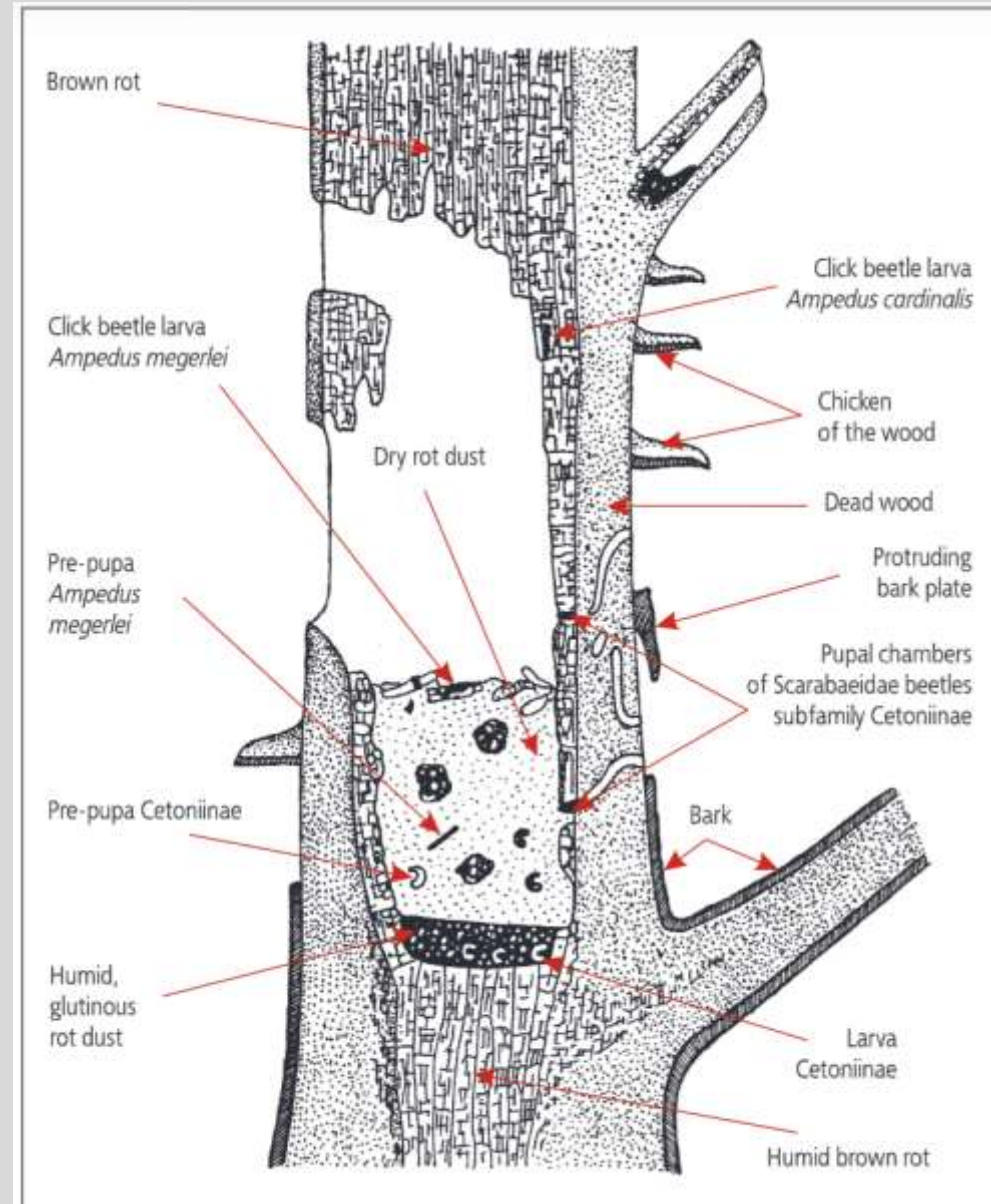
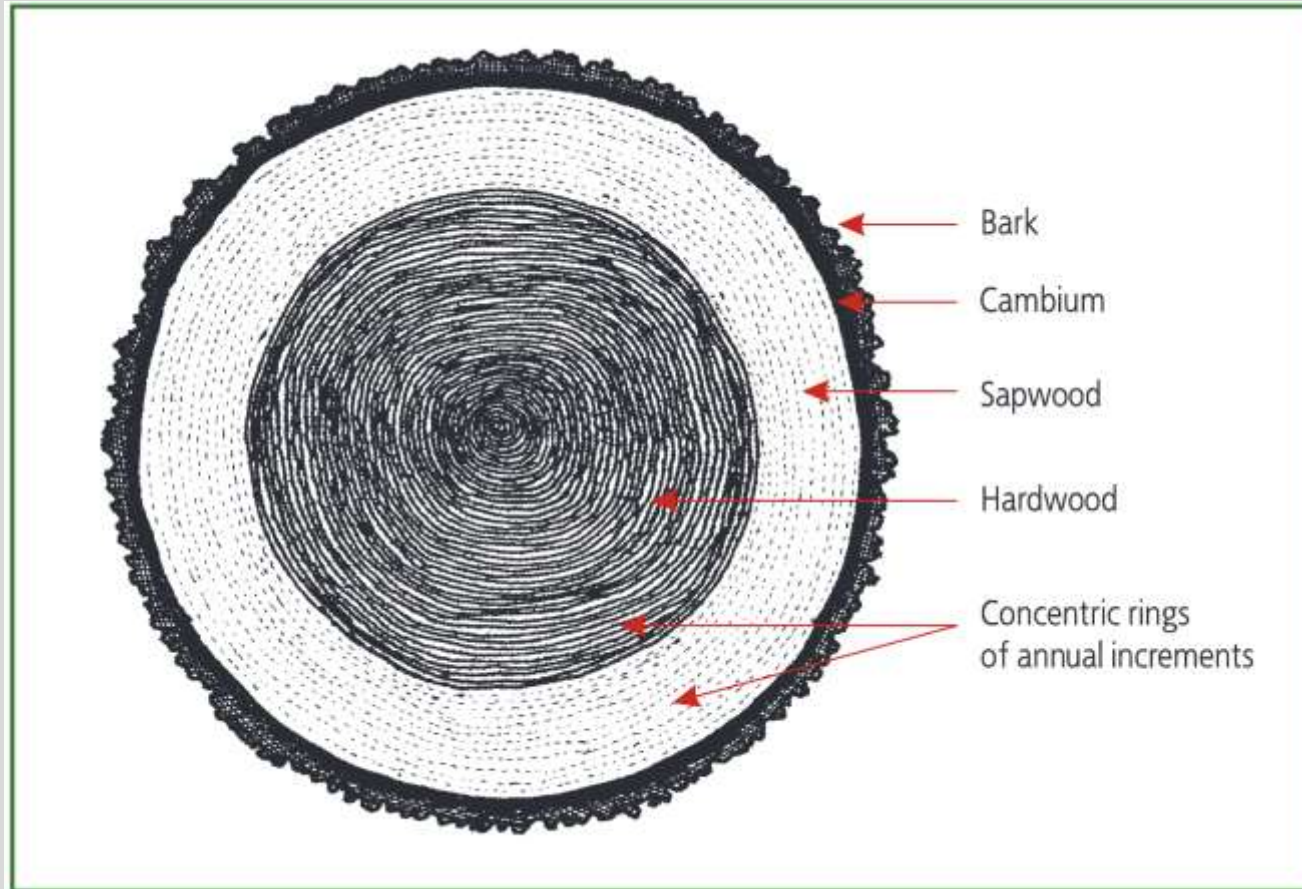




Structure

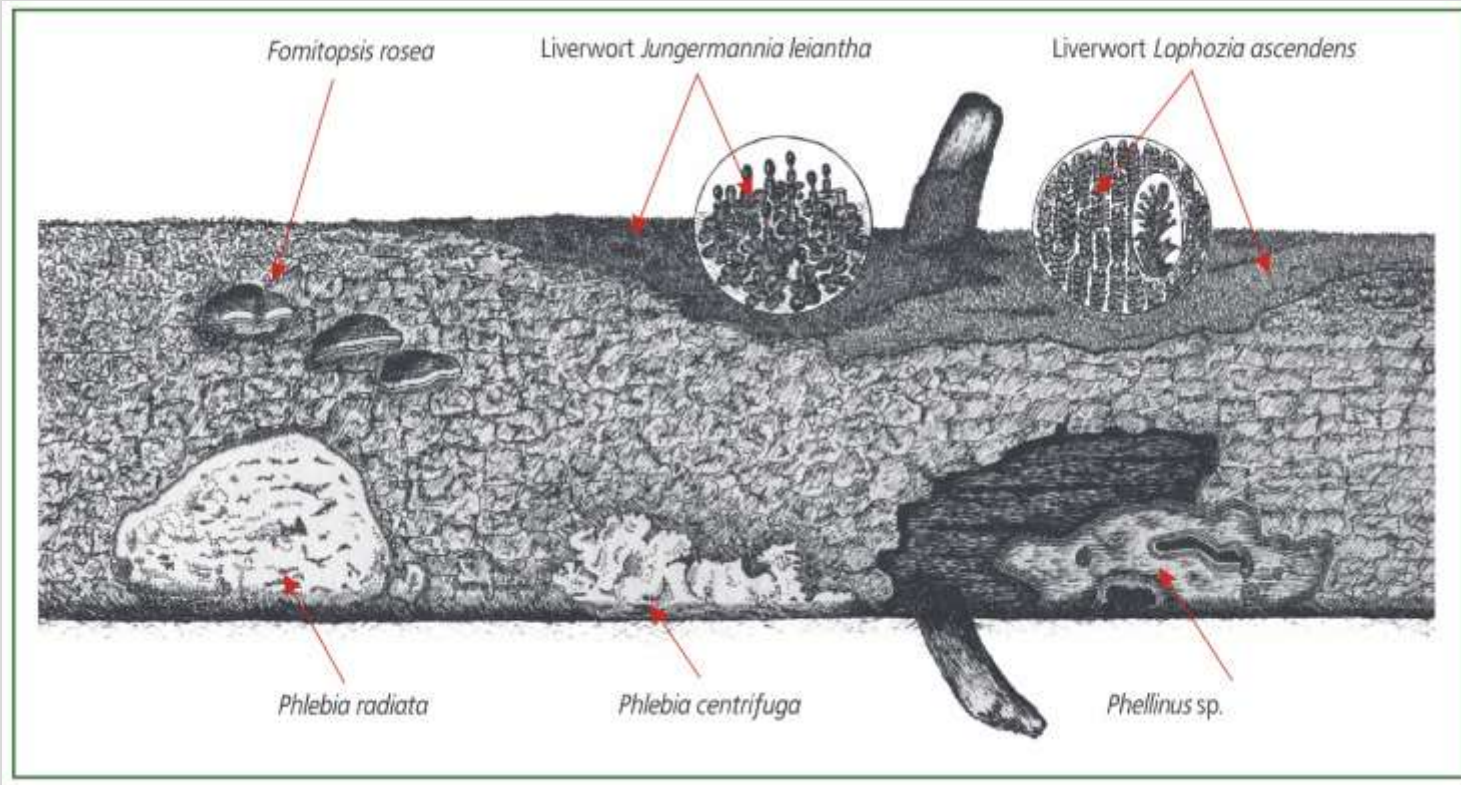


Structure

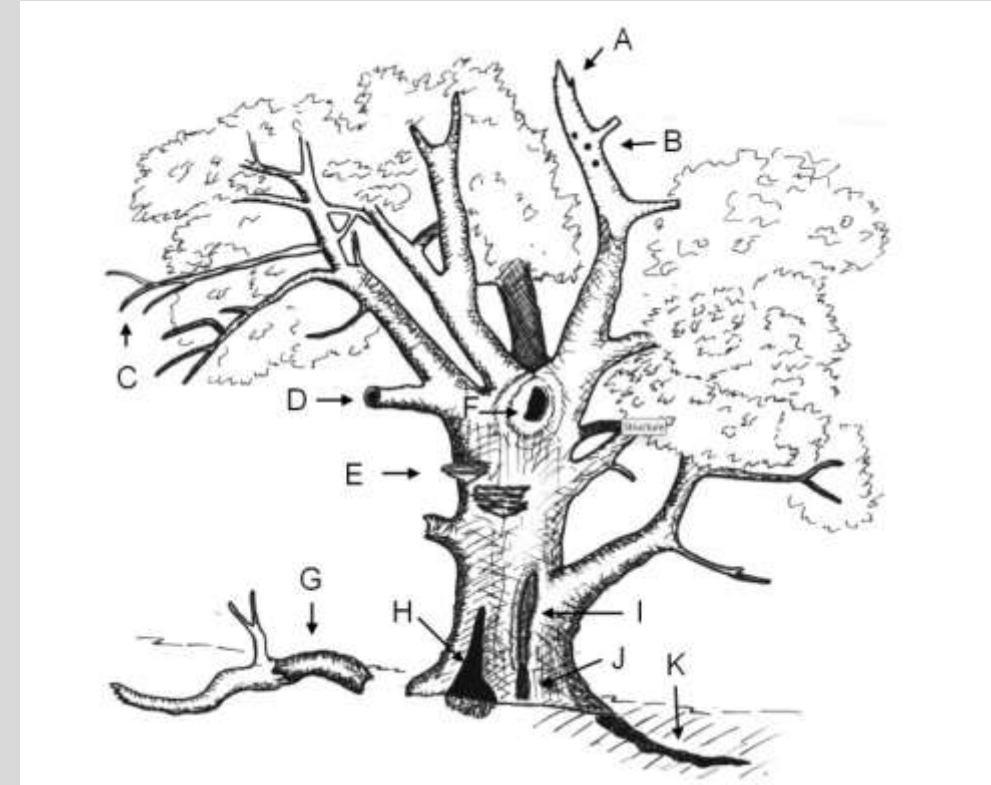




Space



Bobiec A, Gutowski JM, Zub K, Pawlaczyk P, Laudenslayer WF 2005. *The Afterlife of a Tree*. WWF Poland, 252 pp. ISBN 83-920712-1-2



Stokland JN, Siitonen J, & Jonsson BG 2012. *Biodiversity in Dead Wood*. Cambridge Univ. Press, 524 pp. ISBN 9780521717038

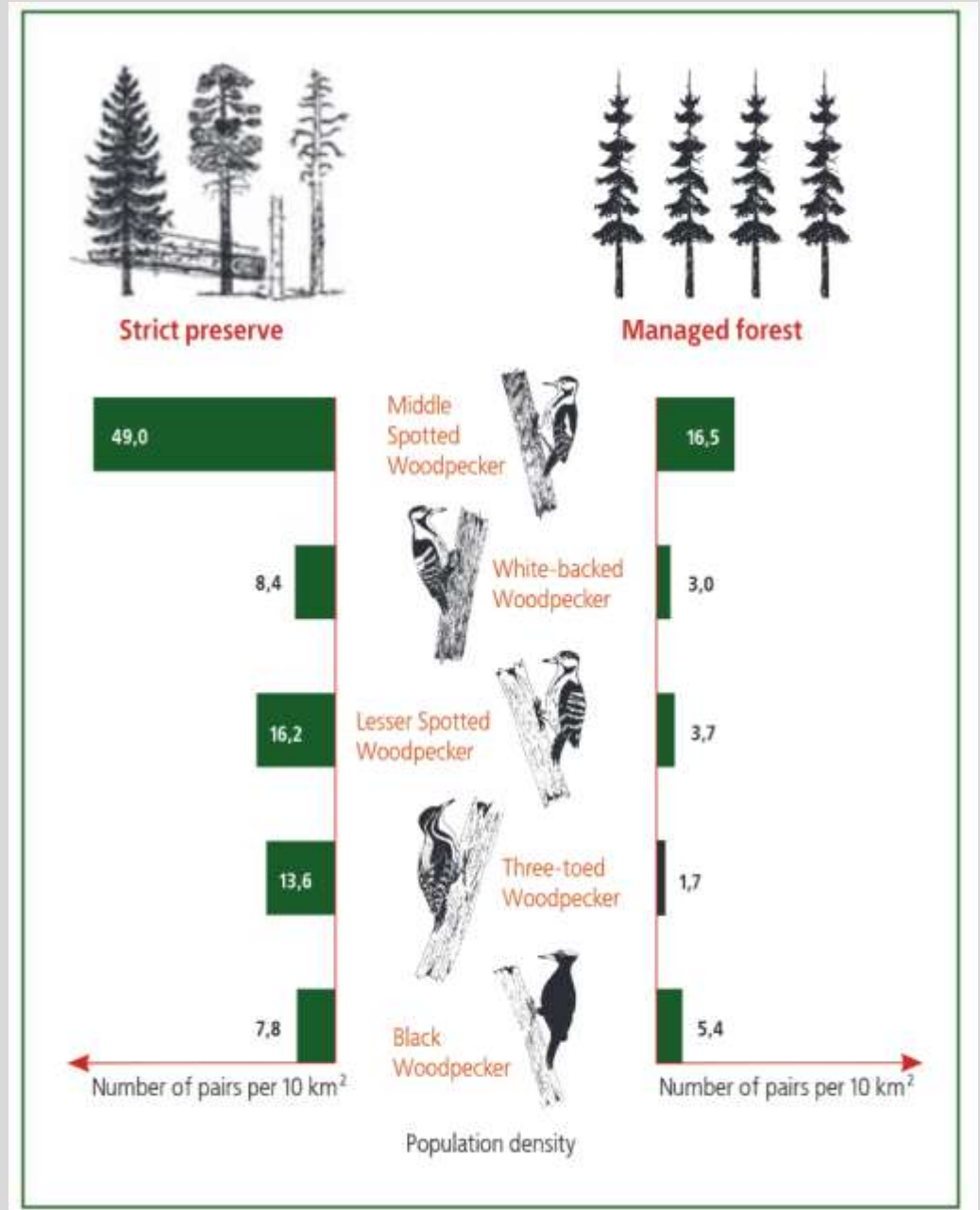


*“Forest cemetery”
Oil painting by Ivan Shishkin, 1893*

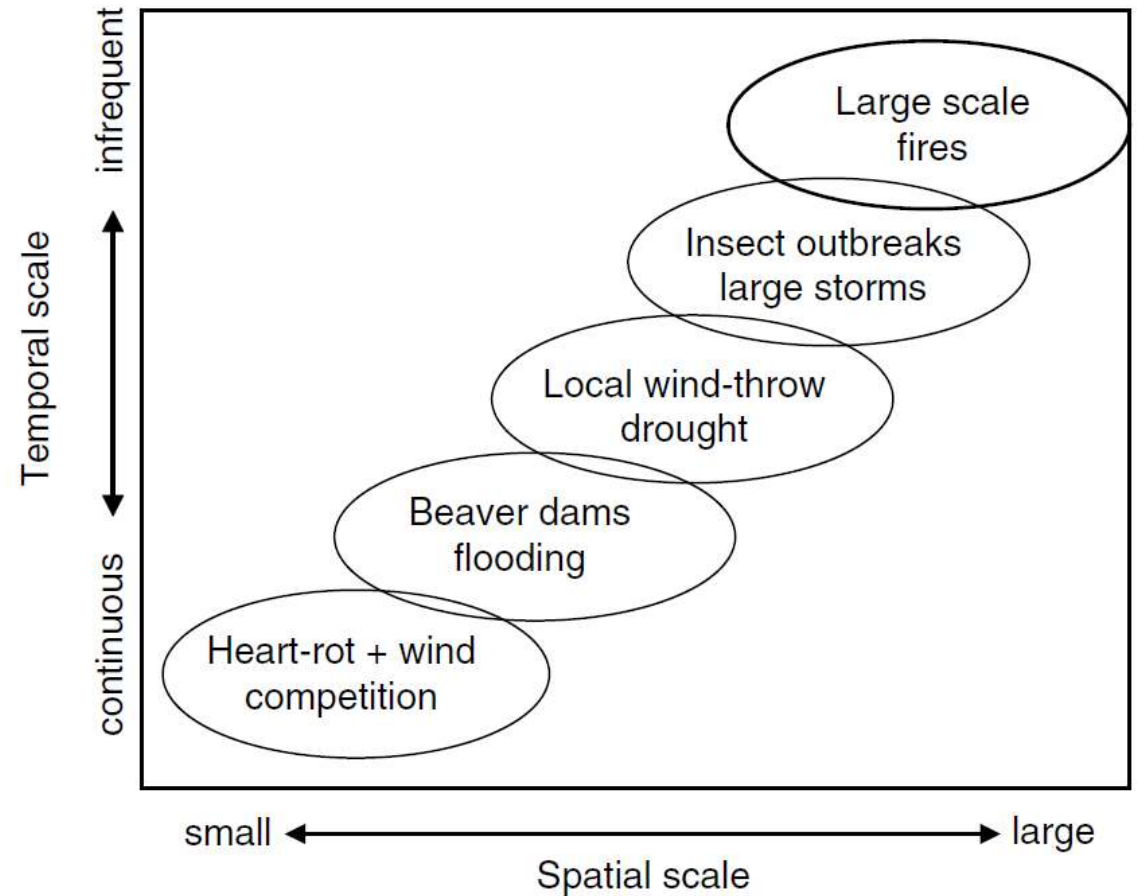
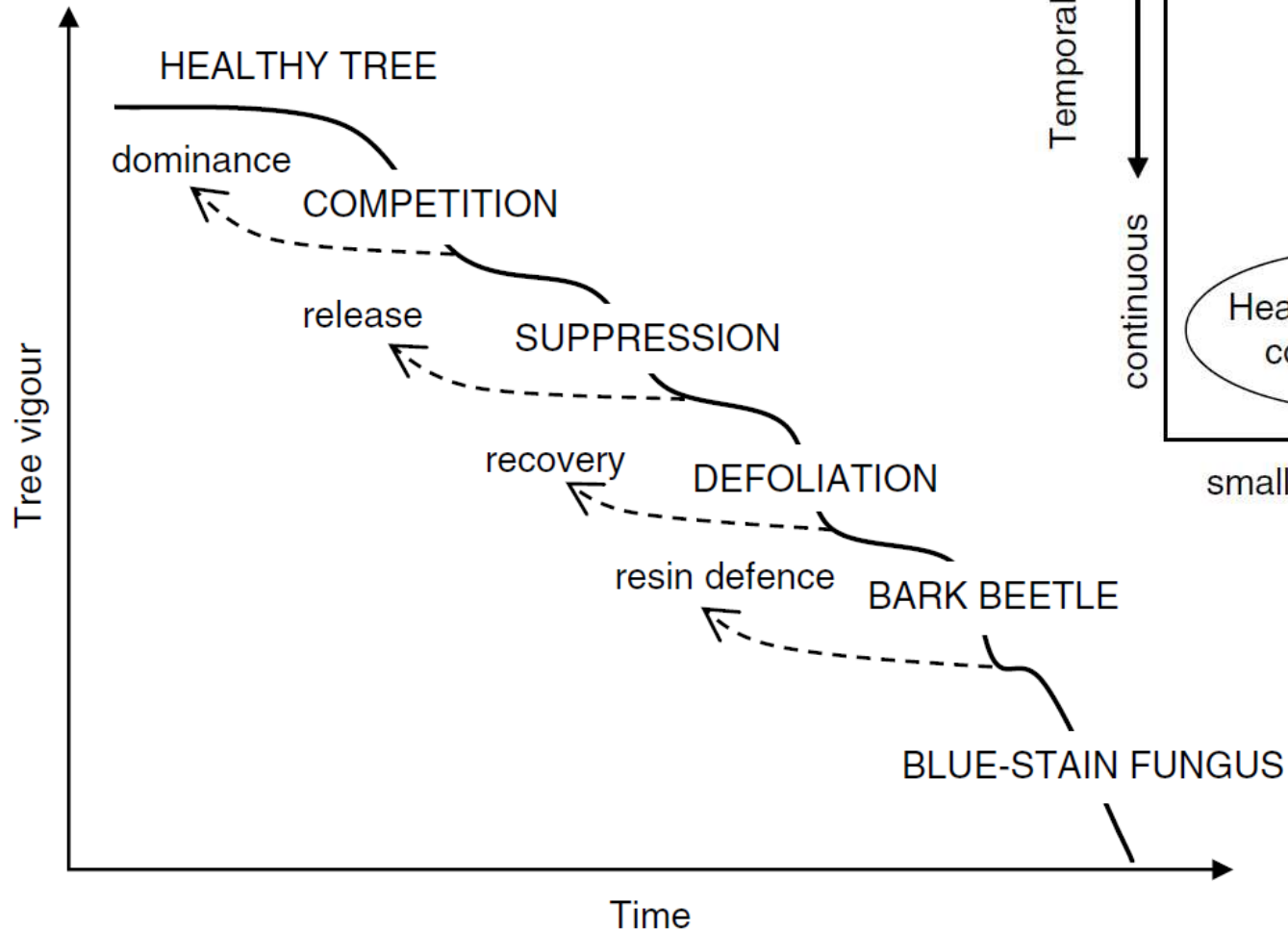


*Unprotected forest near Väärä-Väihi, Jämsä,
Finland Photo, John Jordan, 2006*

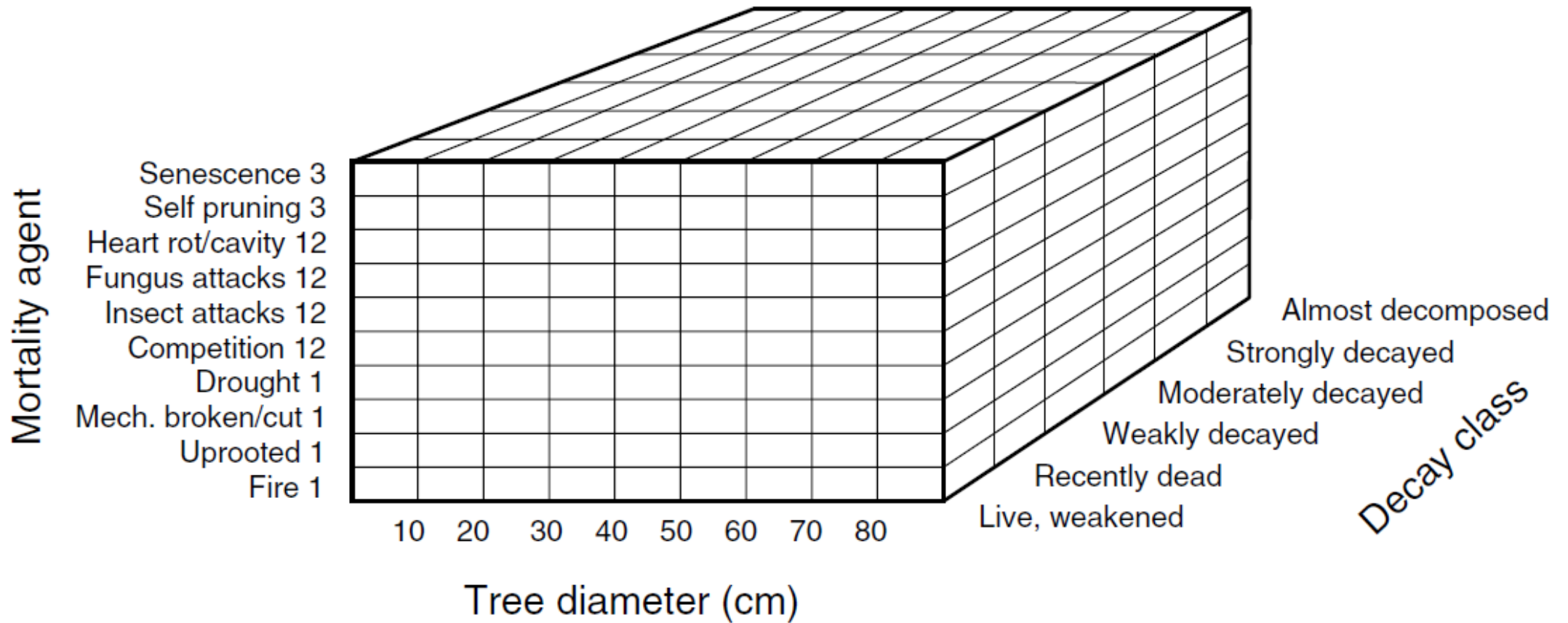
Pressures



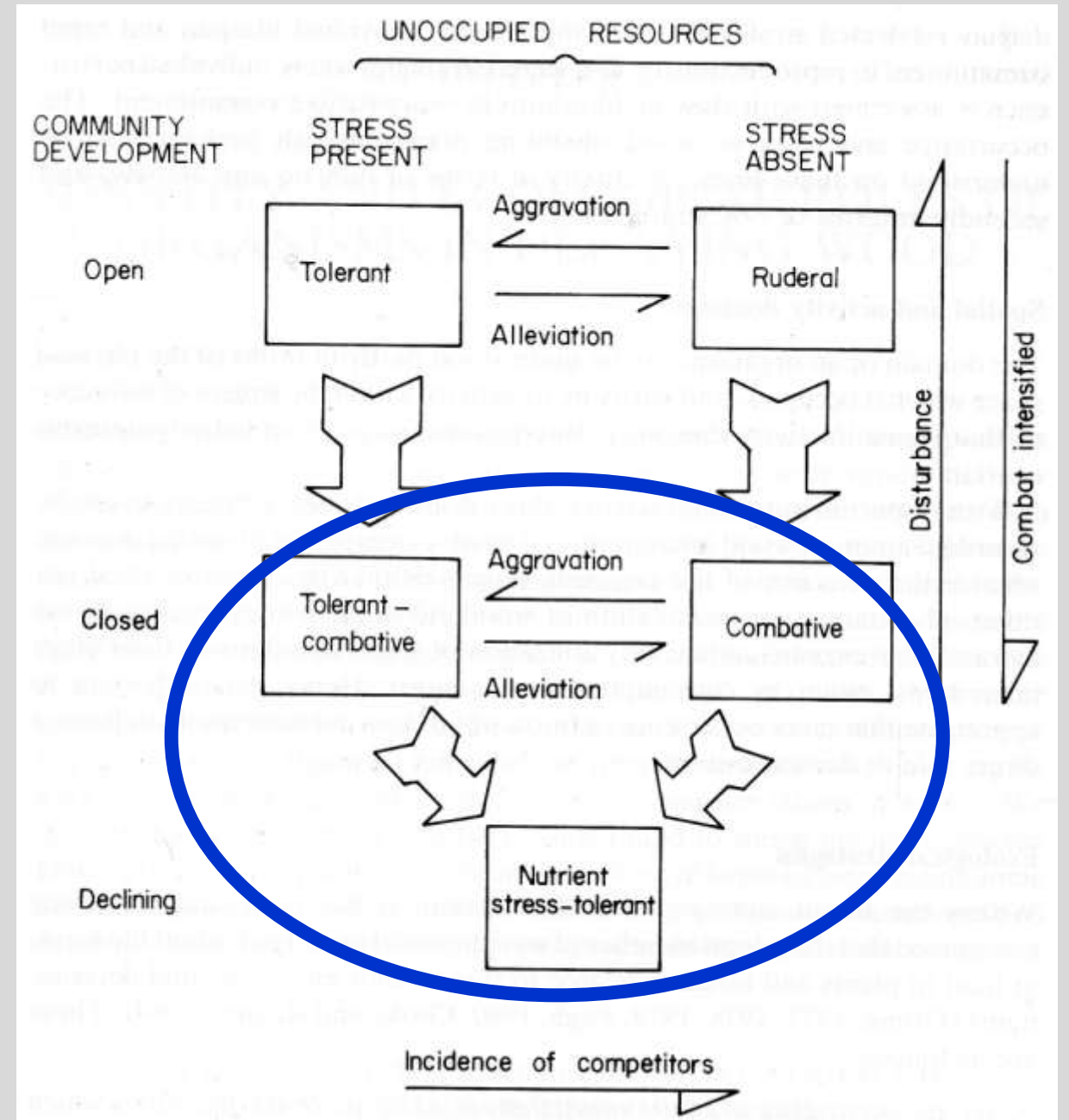
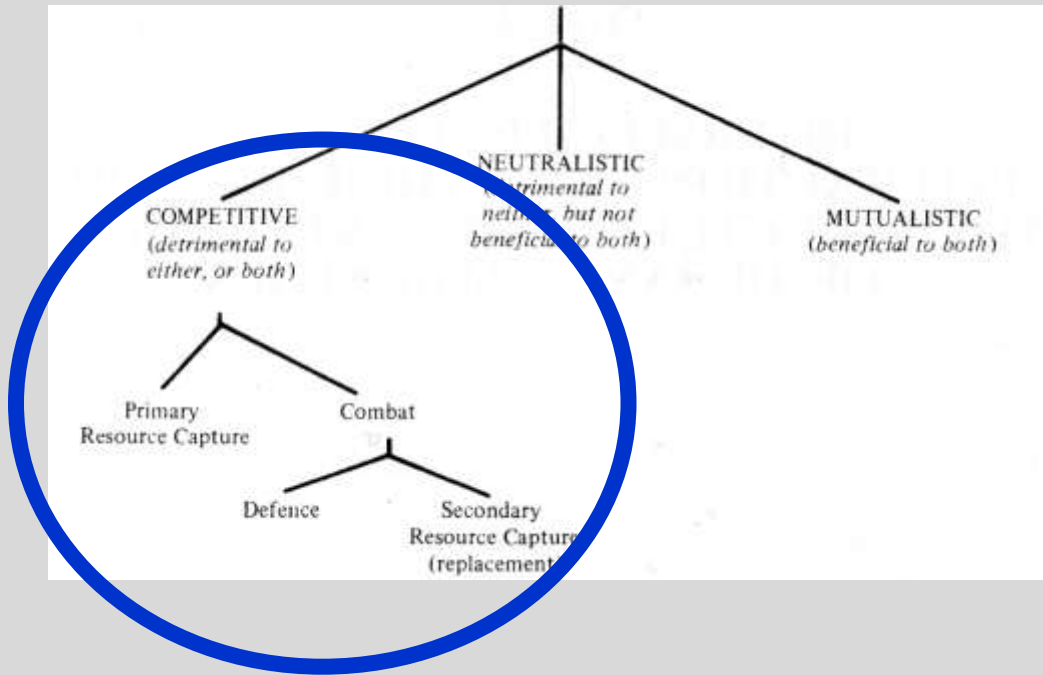
Death, a process



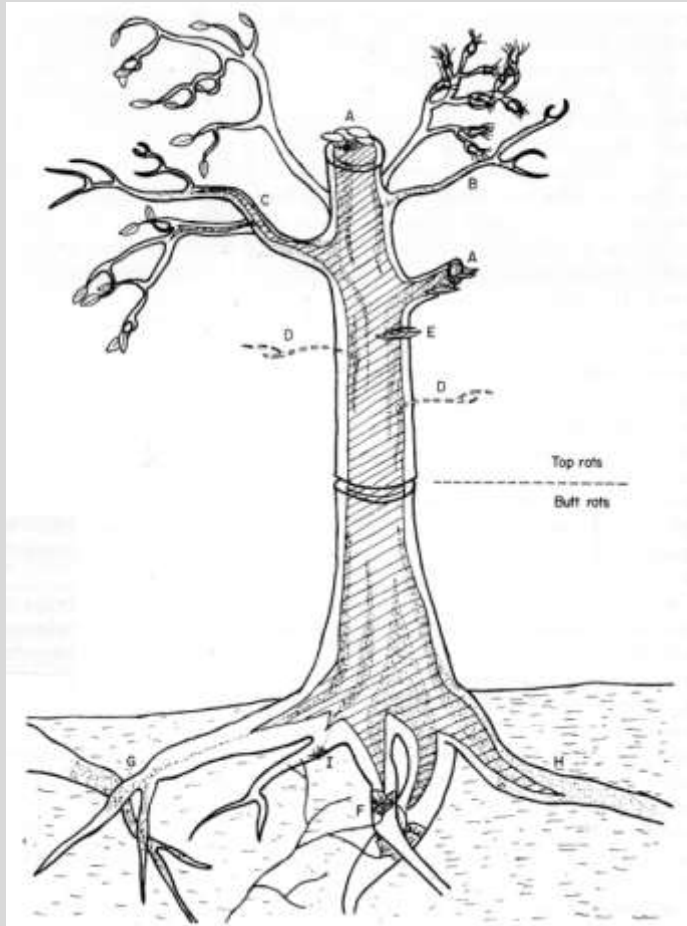
Niches



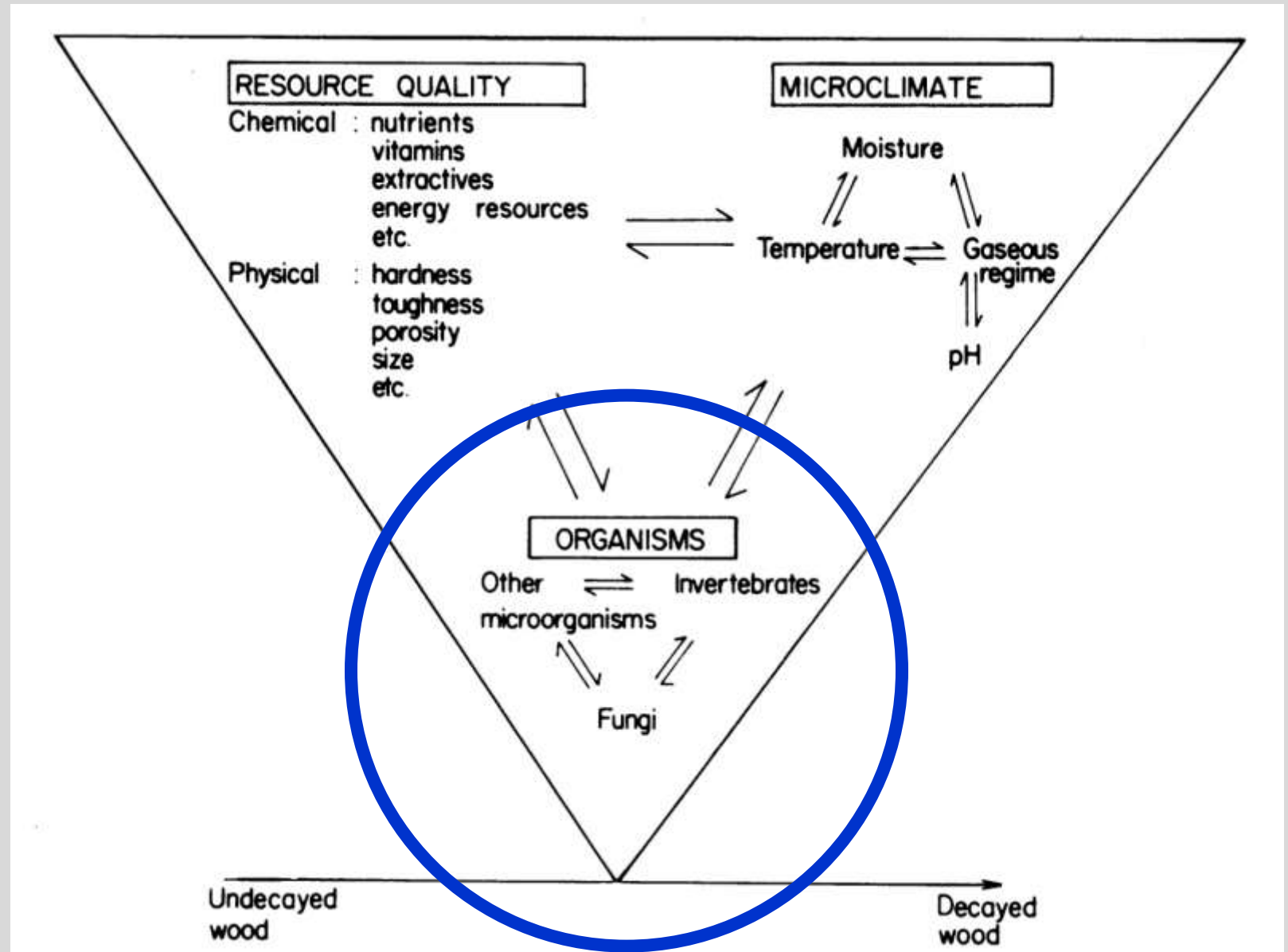
Strategies



Strategies



Rayner & Boddy 1988



Broad relevance

